

## MITIGATION ACTION TRACKER

---

This appendix is designed as a working document to facilitate tracking and management of natural resources mitigation actions related to Tinker AFB projects. As the appendix is developed, it will include mapping, monitoring protocols, and other information to ensure mitigation requirements are met and sustained.

### 1. Glenwood Wetland Mitigation:

In 1999, a 10-acre jurisdictional wetland located on the eastern boundary of the Glenwood Annex and approximately 0.5 miles north of Runway 18 was drained due to waterfowl attraction which created an aircraft strike hazard to local Tinker air traffic. The wetland was attracting about 100 waterfowl and many other birds.

A Section 404 permit was obtained from the U.S. Army Corps of engineers to drain the wetland. Mitigation to offset the loss of the wetland was required under the permit. Tinker AFB cooperated with the U.S. Fish and Wildlife Service's Partners for Wildlife Program to identify potential mitigation sites and to partially fund the mitigation. Mitigation was accomplished by constructing wetlands in Choctaw, Oklahoma (two wetlands totaling 2.3 acres); McCloud, Oklahoma (one 3-acre wetland); Eagle Ridge Institute in Oklahoma City (one 3-acre wetland); Kids-We-Care site (three wetlands totaling 10 acres) located south of Guthrie, Oklahoma; and on Tinker AFB (two fringe wetlands on Prairie Pond and two small wetlands upstream and adjacent to Primrose Pond, totaling approximately 0.5 acres). The wetlands were required to meet specific ecological criteria as specified in a Habitat Evaluation Procedure (HEP).

### 2. Fuel Control Facility Wetland Mitigation:

In 2011, a 0.8-acre regulated wetland was drained in order to construct a Fuel Control Overhaul Facility (Building 3907). This was not a jurisdictional wetland, but was regulated under Federal Executive Order 11990, Protection of Wetlands. Mitigation for this project was proposed through the Environmental Impact Analysis process and developed through cooperative agreements with Land Legacy and Grove Valley Schools located in Edmond, Oklahoma. The mitigation created a 1.0-acre wetland under conservation easement for Grove Valley Elementary School to use as an outdoor classroom. Tinker AFB, the school, Natural Resources Conservation Service (NRCS), United States Fish and Wildlife Service (USFWS), and other agencies worked together in planning, designing, and planting aquatic vegetation to establish the wetland in the spring of 2011.

As of 2019, the mitigated wetland at this site was essentially successful. However, Grove Valley Elementary requested to move the wetland to provide room for school expansion. Land Legacy, in partnership with Tinker AFB, holds a conservation easement on the site to protect the mitigated wetland and the base's interest. Therefore, to remove the mitigated wetland, the school was required to replace it at a new location. Land Legacy would also be required to provide a conservation easement for the new wetland site located on Deer Creek School lands near NW 206<sup>th</sup> and N Meridian providing the same protection for the wetland in perpetuity. The

school's design for the new wetland was reviewed, and with some design changes, was accepted by the base.

The new wetland was constructed late summer and early fall of 2019 with construction being completed by Dec 2019. The following spring, aquatic plants were planted by May of 2020. Mr. Jeff Johnson, Chief Operating Officer (COO) of Deer Creek Schools indicated that some aquatic plants did get established, and the wetland was holding at least some water throughout the year but not enough to establish a fish population. He also indicated there have been issues with reestablishing native vegetation around the pond, particularly due to invading non-native Johnson grass (*Sorghum halepense*). Mr. Johnson has a science teacher with plans to use the wetland as an outdoor classroom. In addition, Land Legacy has completed the land acquisition/easement transfer for the property.

### 3. KC-46A Grassland/Wetland Mitigation:

In 2014, an environmental assessment was completed to evaluate the environmental impacts of constructing taxiways, ramps, multiple hangers, and support facilities for maintenance of the KC-46A aircraft. The preferred alternative was approximately 156 acres of the Burlington-Northern Santa Fe railyard on the north side of the Tinker Aerospace Complex. Approximately 90 acres of grassland bird habitat and some small, low-quality wetlands were expected to be lost as this project was constructed.

**A. Grassland Mitigation:** To offset this loss and meet requirements of federal Executive Orders 11988, 13690, and 13186, a former base housing area is being converted to prairie/savannah and riparian woodland (see “2016 Prairie Restoration” map). Prior to 2014,

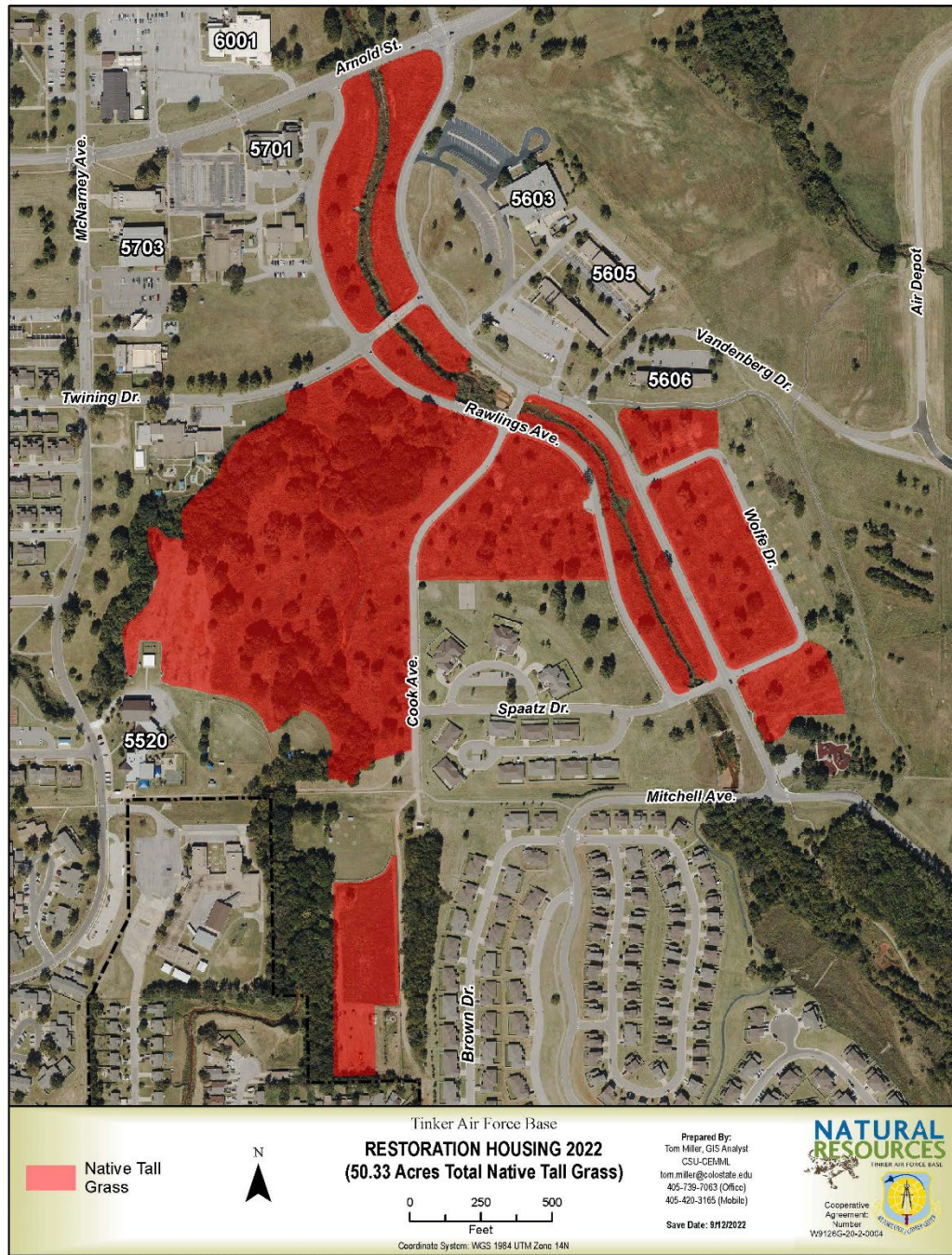




## Appendix F – Mitigation Action Tracker

numerous houses were demolished on the former Spaatz and Chidlaw and the existing Rawlings, Wolfe, and Mitchell, most of which were in the 500-year floodplain. Grassland conversion began in Jul 2014 with the eradication of turfgrass and seeding to native grasses/forbs.

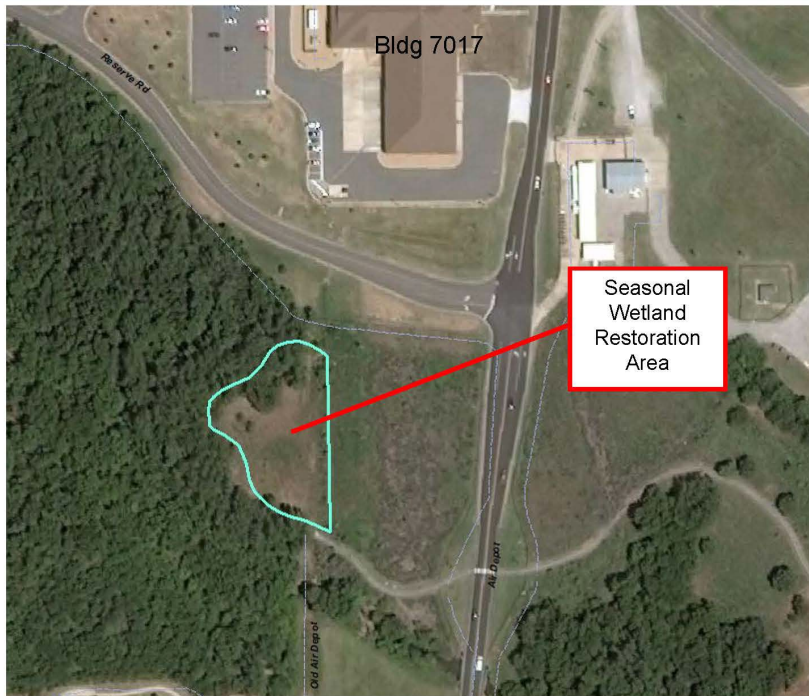
Since 2016, the mitigation site footprint has changed slightly to meet military mission needs. The current footprint continues to meet the mitigation acreage requirements as shown in image below (see “Restoration Housing 2022”).



**B. Wetland Mitigation:** During KC-46A campus construction, three low-quality wetlands totaling 0.6 acres were removed. These wetlands are regulated by Federal Executive Order 11990, Protection of Wetlands, and the loss must be mitigated. A site within the Crutch Creek floodplain was selected and approved by the 72 ABW Facility Board. In the 1980s, this site was used as a concrete, asphalt, soil, and gravel dump. The wetland restoration began in 2020 and as of 2022 is essentially complete (some minor vegetation establishment and water inflow adjustments are ongoing). Excavation work was accomplished primarily by the US Army Reserves supplemented by an Air Force-funded hauling contract to dispose concrete, asphalt, gravel, and soil off base.



## Wetland Restoration Debris Removal



Proponent: 72 ABW/CEIE

Purpose: Removal of asphalt rubble and soil to restore seasonal wetland to satisfy KC-46A EA

*Count on Us!*

6